

**FEBRUARY
2026**

Special Report

Suriname



Shallow offshore drilling in Suriname Basin. Photo: Staatsolie



H.E. Jennifer Geerlings-Simons, President of the Republic of Suriname, at an official state ceremony. Photo: Presidency of Suriname



Assuria Hermitage High-Rise and Tower B. Photo: Wikimedia Commons



Paramaribo City at night. Photo: Shutterstock



Upper Suriname River ecological corridor, rainforest interior. Photo: Katya Van Liebergen

Suriname is emerging as a dynamic hub for investment, where vast natural resources intersect with pro-growth reforms. With opportunities in energy, agriculture, and infrastructure, the nation is positioning itself as a strategic gateway for U.S. investors.

Suriname is moving into a new phase of economic development—one defined by continuity, regional learning, and secured capital. For U.S. investors assessing the next frontier in the Americas, the country's appeal lies not only in its offshore energy potential, but in the way it is sequencing growth: stabilizing first, planning carefully, and building frameworks before scale.

Recent years have been marked by necessary macroeconomic adjustment. Fiscal consolidation, debt restructuring, and reforms in public financial management have restored stability and credibility at a critical moment. Inflationary pressures have eased, transparency improved, and engagement with international financial institutions reinforced policy discipline. For long-term investors, these steps have signaled that Suriname is serious about predictability.

That foundation now coincides with a regional energy shift already underway in neighboring Guyana. The offshore oil boom there has reshaped investor perceptions of the Guyana-Suriname Basin, offering Suriname a rare advantage: the ability to learn from a neighbor's experience

in real time. Rather than rushing to first oil at any cost, Suriname has focused on regulatory sequencing. The country has worked diligently to clarify fiscal terms, strengthen institutional oversight, and align infrastructure planning with production timelines.

Major international operators are already active, and first offshore production is expected within this decade. For U.S. energy companies, service providers, and financiers, the opportunity extends beyond extraction. Local content frameworks, logistics, port services, data, environmental monitoring, and downstream services are all being positioned as part of a broader value chain. The emphasis is on long-term partnerships.

Crucially, energy is being treated as a catalyst, and economic diversification remains central to policy. Agriculture continues to provide employment and export earnings, with scalable opportunities in rice, fisheries, and agro-processing. Forestry, managed responsibly, supports both economic activity and sustainability commitments, while Suriname's largely intact rainforest places it at the center of emerging carbon markets and climate finance discussions increasingly relevant to U.S. institutional investors.

Infrastructure investment is accelerating in parallel. Modernization of ports, transport corridors, and digital connectivity is improving access to regional and international markets. Suriname's geographic position links South America, the Caribbean, and North Atlantic trade routes, and the country adds strategic relevance as U.S. companies reassess supply chains, nearshoring options, and regional hubs. Public-private partnerships are playing a growing role in closing infrastructure gaps that have historically constrained scale.

While Suriname's democracy is vibrant and plural, economic policy direction has remained consistent. The recent election of the country's first female president marked a historic transition without disrupting reform trajectories—an

important signal for investors weighing political risk over a multi-decade horizon.

Relations with the United States are deepening accordingly. Longstanding ties are increasingly complemented by commercial engagement, development cooperation, and private-sector interest. U.S. firms are active across energy, infrastructure, logistics, and services, drawn by Suriname's improving regulatory environment, multilingual workforce, and openness to international partnership. For American companies, the country offers proximity, cultural familiarity, and alignment with rule-based business practices.

Suriname offers an increasingly rare opportunity: a small economy entering a growth phase with the benefit of regional experience, committed capital, and frameworks taking shape before scale.

Challenges remain. Managing expectations around future oil revenues, ensuring skills development keeps pace with investment, and translating macroeconomic gains into broader social outcomes will test institutions. But these challenges are now being addressed from a position of stability rather than uncertainty.

For U.S. investors looking beyond saturated markets, Suriname offers an increasingly rare opportunity: a small economy entering a growth phase with the benefit of regional experience, committed capital, and frameworks taking shape before scale. The momentum is real, and it is being built deliberately.

INSIGHTS



"We are sequencing our offshore development carefully by aligning fiscal rules, local content, and infrastructure before the first oil, not after."

Andrew Baasaran
Minister of Economic Affairs, Entrepreneurship, and Technological Innovation



"Suriname's location at the crossroads of South American and Caribbean markets provides a strategic advantage, positioning it as a resilient regional hub."

Melvin Bouva
Minister of Foreign Affairs, International Business, and International Cooperation



"As energy investment accelerates, we are modernizing ports, logistics, and digital infrastructure to connect Suriname more efficiently with North American and Caribbean markets."

Raymond Landveld
Minister of Transport, Communication, and Tourism

SURINAME'S ECONOMIC GROWTH



\$4.5
BILLION ECONOMY

Nominal (current) GDP of Suriname is \$4.50 billion as of 2025, according to the International Monetary Fund



Offshore Energy Scale

6.5-MILLION-HECTARE OFFSHORE BASIN

50+

Offshore blocks identified



Commercial oil and gas discoveries confirmed



Multi-billion-dollar offshore developments advancing



First oil expected within this decade

≥10

Drilled offshore wells expected between 2025-27



Infrastructure



Multiple ports under modernization



Shorebase and logistics capacity expanding

+22%

UN DEVELOPMENT PORTFOLIO GROWTH

Source: Worldometer

From stabilization to momentum: a market regaining confidence

Suriname is steadily converting reform into measurable results. Fiscal stabilization under an IMF-supported program has strengthened macroeconomic discipline, improved transparency, and restored confidence among international partners. Inflation has been reduced significantly, public finances are under firmer control, and policy predictability has increased.

Flagship offshore developments, most notably the GranMorgu project, are progressing toward production and signal a new phase for Suriname's energy sector. In parallel, targeted public and private

investments in ports, transport corridors, and digital infrastructure are modernizing the business environment and reducing structural bottlenecks. Improvements in logistics, connectivity, and regulatory coordination are strengthening Suriname's role as a gateway between the Caribbean and South America.

With clearer regulatory frameworks, renewed engagement with multilateral institutions, and growing interest from international investors, Suriname is positioning itself as a smaller but increasingly predictable market.



GranMorgu project. Photo: Staatsolie Suriname

INVESTMENT

Enabling sustainable sector growth

Suriname's rich resources, strategic location, and investor-friendly policies make it a prime destination for sustainable growth and opportunity.



Jules Sedney Haven, Paramaribo commercial port. Photo: Shutterstock

Economic activity in Suriname is broadening across multiple sectors. Energy investment is generating momentum that reaches well beyond offshore operations. In turn, housing, healthcare, logistics, finance, and business services are expanding alongside it, reinforcing the foundations of the wider economy.

This expansion follows practical demand. Off-shore development brings workers, contractors, and suppliers into the country. Population movement increases, intensifying transport usage, while services scale where activity concentrates. Secondary sectors grow in response to demand, keeping projects operational and communities functioning.

Housing has become a priority area. Residential projects are emerging through public-private cooperation and updated financing structures, with development focused on affordability and proximity to employment. This housing supports workforce stability and reduces pressure on urban centers that are already under strain.

Healthcare capacity is rising in response to increased mobility and economic density. Demand for diagnostics, certification, and occupational health services continues to grow, while clinics, laboratories, and compliance providers are expanding to support trade, aviation, and cross-border movement. Increasingly, healthcare services are embedded in the operational environment of companies active in the country.

Across industries, the private sector is strengthening coordination. Business associations and trade networks are working to reduce administrative friction and improve market access. "What investors increasingly value is speed and coordi-

nation: clear entry points, faster licensing, and institutions that understand cross-border business," says Anuska Varsha Sonai, President of the American Chamber of Commerce of Suriname.



"What investors increasingly value is speed and coordination: clear entry points, faster licensing, and institutions that understand cross-border business."

Anuska Varsha Sonai
President, American Chamber of Commerce of Suriname

For U.S. investors, parallel sector development matters—improving execution, lowering operational risk, and supporting long-term viability. As large-scale energy projects advance, growth is taking shape right across the economy.

FOCUS ON ASSURIA

Stability, trust, and long-term value in a transforming economy

In an era of reform and renewed investor interest, Assuria demonstrates how disciplined governance can anchor long-term resilience in open Caribbean economies.

Assuria has positioned itself as one of Suriname's most resilient financial institutions by pursuing diversification, strong governance, and long-term investment discipline. Operating across life, health, general insurance, pensions, and institutional investment, the group plays a central role in the country's financial system at a time when predictability and trust are once again central to economic recovery.

Beyond insurance, Assuria has steadily expanded its role as an institutional investor. In recent years, the group has made significant investments in commercial real estate, including high-rise office towers and large-scale event facilities in Paramaribo. Originally developed for internal use, these assets now serve international companies active in oil and gas, mining, logistics, and professional services. The timing is deliberate. As offshore energy developments progress and supporting industries scale up, demand for high-quality office infrastructure has followed.

"We foresaw that demand for office space would rise," Merhai explains, describing these projects as anticipatory investments aligned with broader economic developments. Rather than speculative expansion, the strategy reflects a long-term view of Suriname's evolving business environment. A strategy where institutional capital supports functional growth.

Operationally, Assuria continues to modernize its core systems. The adoption of IFRS 17 enhances transparency and comparability, aligning the group with international reporting standards. At the same time, Assuria is strengthening its reinsurance partnerships, reinforcing balance-sheet resilience and risk-transfer discipline. Investments in data analytics and experimental AI applications further support underwriting quality and operational efficiency.

"Innovation is embedded in our DNA," Merhai notes. "If we were an oil company, we would be exploring offshore fields." The comparison is telling: innovation is framed not as disruption for its own sake but as structured exploration—measured, tested, and aligned with long-term value creation.

Governance remains central to Assuria's identity. "Good practices and ethical standards are part of our company's culture," Merhai says. In a reforming economy, that emphasis resonates strongly. As Suriname prepares for increased foreign investment and deeper regional integration, institutions capable of combining professionalism with local commitment will be critical.

Assuria's strategy favors continuity over cycles and discipline over speed. As the country enters its next economic phase, the group's approach illustrates how resilient institutions are built: through governance, foresight, and a long-term view of national development.



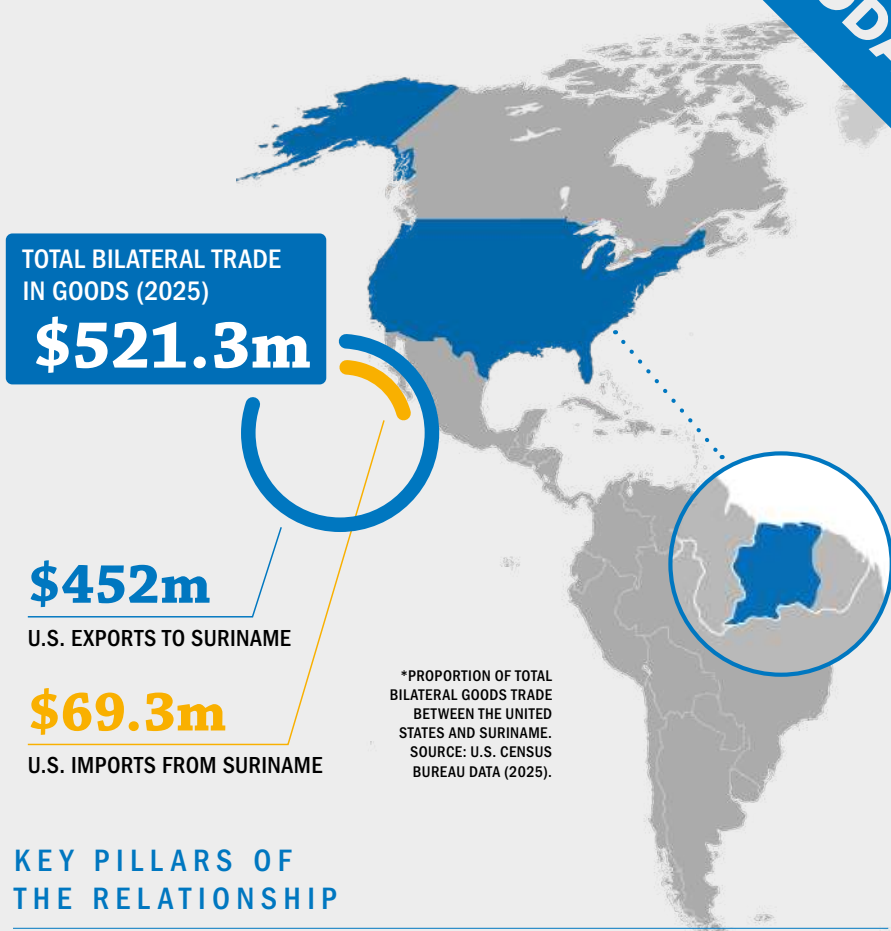
"In open economies, diversification is essential to manage volatility responsibly."

Mario Merhai
CEO, Assuria

Suriname's recent reform trajectory—marked by fiscal consolidation, structural adjustment, and tighter financial oversight—has reshaped expectations across the private sector. In this environment, institutions capable of absorbing volatility while maintaining continuity have taken on added significance. Assuria's long-term positioning reflects precisely that role: a stabilizing anchor within a small, open economy navigating transition.

"In open economies, diversification is essential to manage volatility responsibly," says CEO Mario Merhai. "This volatility was the reason we developed our strategy to expand beyond Suriname, ensuring steady growth despite local instability." That strategy has resulted in a growing Caribbean footprint, reducing concentration risk while strengthening the group's regional relevance. For investors, this approach signals maturity: diversification not as opportunism but as structured risk management.

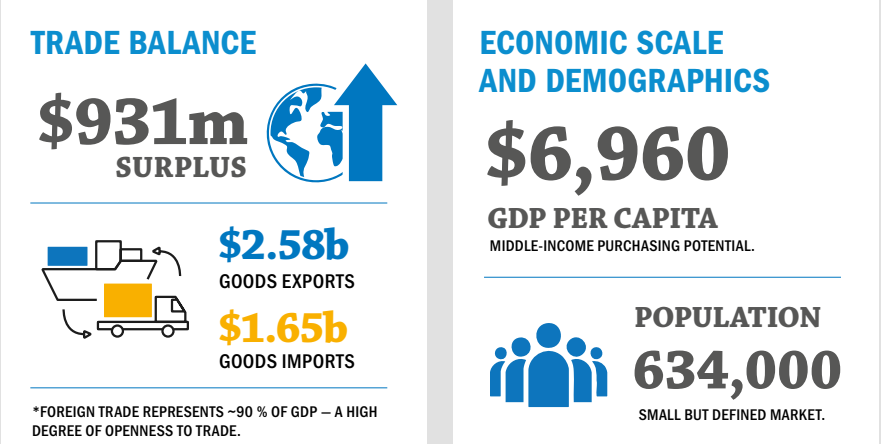
SURINAME-U.S. BILATERAL RELATIONSHIPS



KEY PILLARS OF THE RELATIONSHIP

- LONGSTANDING DIPLOMATIC RELATIONS
- EXPANDING U.S. PRIVATE-SECTOR PRESENCE
- STRONG COOPERATION IN ENERGY, HEALTH, AND LOGISTICS
- STRATEGIC LOCATION FOR U.S. NEARSHORING AND REGIONAL ACCESS
- INCREASING INSTITUTIONAL AND TRADE ENGAGEMENT

SURINAME OVERVIEW (2024)



SOURCE: THE WORLD BANK

Assuria Group

Your Trusted Caribbean Insurance Partner

- ✓ Over 130 years of expertise in Life, Pension, Health, Property & Casualty insurance solutions
- ✓ Serving Suriname, Guyana, Trinidad & Tobago, Curaçao & beyond

Our Purpose: Creating freedom by securing your future

Solid and Secure!
Visit: www.assuria.sr

ENERGY

Building the ecosystem: from discovery to delivery

For Suriname's offshore sector, the moment of transition has arrived: a narrow window in which strategic preparation must now be converted into decisive action.

Moments of structural change rarely announce themselves in advance. For Suriname, that moment arrived recently, and has now accelerated. The offshore sector has entered a decisive phase in which years of planning are giving way to execution, and where readiness will determine how much value this opportunity ultimately delivers. For international investors, the central question is no longer whether Suriname has resources, but whether the country can translate offshore success into durable, broad-based growth.

The turning point came in 2023, when TotalEnergies and APA Corporation reached a final investment decision on GranMorgu, Suriname's first deepwater oil development. The decision marked more than geological confirmation. Capital was no longer conditional, and timelines became real. From that moment, the offshore story moved decisively onshore.

What followed has been less visible than a drilling campaign, but far more telling. Logistics providers began expanding shorebase capacity. Construction and engineering firms upgraded ports, access roads, and industrial zones around Paramaribo. Service companies invested early in equipment, safety systems, and internationally compliant workforce training—often years ahead of first oil. This sequencing is deliberate. Operators active in Suriname are applying lessons from other frontier energy markets, where insufficient early infrastructure led to cost overruns, delays, and value leakage abroad.

Housing is one of the clearest indicators of this shift. Demand is rising not only for temporary accommodation linked to energy projects, but for permanent residential areas that support a growing workforce, families, and local communities. Development is being targeted to areas of economic activity rather than isolated enclaves.

"Housing development is increasingly aligned with economic growth corridors—close to ports, industrial zones, and expanding urban centers," says Ignaz Ahmadali, CEO of Fairali Development. Fairali is quick to add that the focus extends beyond commercial demand. "As the economy grows, you also need better schools, healthcare access, and livable neighborhoods for the local population. Otherwise, growth remains superficial."

Security is another parallel sector scaling in anticipation rather than in reaction. As industrial activity increases, so do expectations around risk management, compliance, and operational continuity. This is not limited to offshore assets, but extends to offices, logistics hubs, construction sites, and residential developments.

"Energy development changes the risk profile of a country," says Badwie Chehin, CEO of Profes-



Shorebase logistics supporting offshore development. Photo: Professional Private Security (PPS)



"Housing development is increasingly aligned with economic growth corridors—close to ports, industrial zones, and expanding urban centers."

Ignaz Ahmadali
CEO, Fairali

Suriname's history offers both promise and warning. For decades, the economy moved in cycles of commodity-driven growth and contraction, each time constrained by the same vulnerability: reliance on extractive sectors without sufficient insulation elsewhere. That memory matters now. The offshore developments unfolding today are larger, faster, and more capital-intensive than anything before. The difference is that this time, Suriname is moving ahead of the curve, building the supporting ecosystem before pressure distorts decision-making.



"Energy development changes the risk profile of a country."

Badwie Chehin
CEO, Professional Private Security (PPS)

sional Private Security (PPS). "Companies don't just need guards. They need integrated security planning, trained personnel, and systems that meet international standards." PPS has been investing in training, technology, and coordination capabilities to meet the demands of more complex industrial operations.

Education and workforce development form another critical layer. Service providers are increasingly required to meet international certification standards, whether in safety, environmental management, or technical execution. Training

institutions and private companies are responding with programs aimed at retaining skills locally rather than importing them at premium cost.

What defines this moment is alignment. Capital has been committed. Institutions are functioning. Infrastructure is being built before demand peaks. That convergence does not last indefinitely. Offshore success attracts attention, but sustaining it requires partners who engage early, build locally, and think beyond first oil.

For investors, the implications extend well beyond upstream production. Early infrastructure development is generating opportunities across logistics, real estate, utilities, professional services, insurance, and financial services. Demand is rising for compliant office space, warehousing, transport solutions, risk coverage, and long-term asset management.

Importantly, the pace of onshore investment suggests confidence not only in GranMorgu itself, but in Suriname's broader regulatory and contractual framework. As execution replaces exploration as the dominant theme, Suriname is positioning itself less as a high-risk frontier and more as an emerging energy market where preparation, timing, and discipline shape returns.

Suriname's offshore future is therefore not defined by speed, but by restraint. The country is building early, and with memory. In an industry where waiting often means arriving too late, that discipline may prove to be its most valuable asset.

LEADING VOICES

Suriname's economic transition is being shaped by leaders balancing discipline, execution, and long-term credibility across energy, resources, and institutional development.

■ STAATSOLIE SURINAME



Annand Jagesar
Managing Director,
Staatsolie Suriname

"Suriname has never nationalized an international oil partner. Contracts here are honored—through cycles, governments, and price shocks."

At the center of Suriname's energy ecosystem stands Staatsolie, the national oil company that has shaped the sector for nearly five decades. Its role today extends beyond production: Staatsolie functions as a stabilizing institution, setting standards for transparency, contract reliability, and long-term planning.

The GranMorgu offshore project marks a step-change in scale. According to Managing Director Annand Jagesar, the project alone is expected to generate over \$10 billion in the coming decade—more than twice what Staatsolie transferred to the state over the previous 45 years combined. Yet, Jagesar consistently emphasizes re-

straint and discipline. Suriname's petroleum framework is designed to avoid the boom-and-bust cycles that have affected other resource economies. Competitive bidding rounds, clear petroleum legislation, and predictable production-sharing contracts have helped attract international partners while maintaining state oversight.

Equally important is local content. All offshore wells drilled in Suriname rely on local suppliers, from logistics and fuel to food and services, ensuring that offshore activity translates into domestic economic participation rather than leakage abroad.

For foreign investors, this continuity matters as much as geology. In many resource-rich jurisdictions, changes in government have been followed by license revisions, windfall taxes, or nationalization of strategic assets. Suriname's approach has been different. The petroleum law and production-sharing contracts provide clear rules on cost recovery, profit oil, and repatriation, reducing uncertainty across the project lifecycle.

"Suriname has never nationalized an international oil partner," Jagesar notes. "Contracts here are honored—through cycles, governments, and price shocks."

This stability has helped attract long-term partners willing to commit capital years before first oil. It has also allowed service providers, financiers, and insurers to model risk with greater confidence.



Protected Amazonian rainforest corridor. Photo: Staatsolie



Local operator in the Staatsolie refinery. Photo: Staatsolie



Deepwater drilling offshore Suriname. Photo: Staatsolie

■ SURINAME ENERGY CHAMBER



Orlando Olmberg
President,
Suriname Energy
Chamber

"The Energy Chamber is here to support companies in all fields of energy—renewable and conventional—by helping them find partners, understand the market, and build a sustainable presence in Suriname."

Renewable energy is increasingly becoming a practical investment theme in Suriname, driven by rising electricity costs, growing demand, and the need for more reliable energy systems across industry, logistics, and communities. Distributed solar energy systems, particularly in the interior, require higher upfront investment due to distance, transport, and installation complexity. However, these systems provide communities and facilities with access to a more reliable and consistent energy source, reducing dependence on costly fuel supply chains and unstable grid connections.

Alongside distributed solutions, renewable energy sources such as solar, wind, and hydropower remain essential to Suriname's broader energy strategy. More than 50% of the country's electricity generation already comes from renewable sources, largely hydropower, supporting Suriname's position as a low-carbon economy.

Rising electricity costs have further strengthened the business case for renewable and hybrid energy systems. Solar and hybrid applications are increasingly deployed at ports, industrial zones, mining operations, and remote facilities, where they help manage operating expenses, improve reliability, and reduce exposure to grid limitations.

Investment opportunities extend beyond generation capacity alone. Engineering, installation, maintenance, storage, and energy management systems represent growing areas for local participation and partnership development.

It is here that the Suriname Energy Chamber plays a coordinating role. "The Energy Chamber is here to support companies in all fields of energy—renewable and conventional—by helping them find partners, understand the market, and build a sustainable presence in Suriname," says President Orlando Olmberg. As Suriname modernizes its energy mix, renewable energy is no longer peripheral, but increasingly integrated into how the economy powers growth while maintaining system reliability.

■ DP WORLD



Mervel
Kotzebue-Fleur
CEO, DP World

"Ports succeed when systems, safety, and people operate together under clear standards."

For Suriname, the modernization of Paramaribo's harbor is fundamentally an operational challenge. As cargo volumes increase and shipment profiles become more complex—ranging from project cargo and industrial inputs to containerized consumer goods—the port must function within tightly controlled operational parameters. DP World's presence introduces an institutional operating model designed for precisely that environment. As a global ports and logistics operator active across more than 80 countries, DP World applies standardized frameworks for terminal operations, safety management, asset maintenance, and workforce certification. In Paramaribo, this has meant moving beyond ad-hoc port handling toward clearly defined procedures for vessel berthing, yard planning, cargo flows,

and interface management with customs and shipping agents. The objective is consistency under varying demand conditions.

Under CEO Mervel Kotzebue-Fleur, the emphasis has been on embedding these systems locally rather than accelerating physical expansion prematurely. Priority has been given to operational discipline, safety culture, and process integrity—areas that directly influence turnaround times, equipment reliability, and risk exposure for cargo owners and insurers. "Ports succeed when systems, safety, and people operate together under clear standards," she notes.

DP World's institutional footprint reduces operational volatility by aligning local port practices with international norms. Predictable procedures, documented controls, and trained personnel create a port environment capable of absorbing growth without compromising safety or efficiency.

Kotzebue-Fleur's leadership reflects a broader shift within heavy infrastructure sectors, where credibility is established through execution rather than scale alone. By anchoring Paramaribo's harbor within DP World's global operating standards, the port is evolving into a stable, professionally managed logistics platform—positioned to support Suriname's next phase of economic activity with control, resilience, and precision.

TOURISM

Connecting Suriname to the world

How increased international interest is shaping Suriname's tourism outlook and international visibility.



Table Mountain. Photo: Ministry of Transport, Communication and Tourism



Untouched coastline along Suriname's Atlantic shore. Photo: Ministry of Transport, Communication and Tourism



Saint Peter and Paul Cathedral. Photo: Ministry of Transport, Communication and Tourism

When Raymond Landveld speaks about connectivity, he starts with access—access to the many natural and cultural gems for the people of Suriname, for the CARICOM region, and for the wider international community. But also access to opportunity, and access to the world. “Connectivity determines whether people and businesses can actually participate,” the Minister of Transport, Communication and Tourism says. “Without it, potential remains invisible.”



“Tourism is where culture, nature, and economic growth converge.”

Raymond Landveld
Minister of Transport, Communication and Tourism

For Suriname, that insight is shaping how tourism is positioned for the years ahead. The country is not competing on volume; it is competing on distinction. Suriname is deliberately choosing quality tourism—anchored in preservation, authenticity, and low-impact growth. Landveld points to the country's layered history as an untapped strength. “Tourism is where culture, nature, and economic growth converge,” he notes. Plantation sites, colonial architecture, Maroon heritage, Indigenous knowledge systems, and religious coexistence offer narratives that go far beyond eco-tourism alone. These stories, he believes, resonate with travelers seeking meaning rather than spectacle. “We are among the greenest countries in the world,” Landveld says. “But we are also one of the most multicultural. That combination is not common, and it matters.”

The government's focus is therefore less on mass arrivals and more on enabling standards that support long-term value. Tourism development is framed as selective: strengthening hospitality

quality, improving access beyond the capital, and ensuring that growth benefits local communities rather than overwhelming them. As international business activity increases, more visitors and professionals alike are expected to travel beyond Paramaribo, with expectations that reflect global hospitality norms.

“We are not trying to become a mass tourism destination,” Landveld says. “We are building something that fits who we are: nature, culture, and respect for place.”

That approach aligns with shifting travel preferences. Visitors increasingly seek destinations that offer authenticity and environmental integrity. The Central Suriname Nature Reserve, a UNESCO World Heritage Site spanning 1.6 million hectares, is one example. Just as important are everyday encounters: river communities, Indigenous traditions, and a food culture shaped by multiple continents.

In a world where destinations compete to grow faster, Suriname is choosing to grow differently. The country is working diligently to attract the right visitors. Landveld describes a model focused on longer stays, smaller numbers, and higher standards.

For American travelers in particular, Suriname occupies a rare position. It is culturally Caribbean, geographically South American, and historically connected to Europe, yet it remains largely unknown. English is widely understood, the legal system is familiar, and the country sits within easy reach of the United States. What it lacks in mass-market infrastructure it compensates for with depth.

Preservation is a non-negotiable boundary. With more than ninety percent of the country still forested, Suriname is often cited as one of the most carbon-negative nations in the world.

“We don't want to look back in ten years and ask what we lost,” Landveld says. “Tourism has to strengthen what is already here—not replace it.”

For investors and visitors alike, the message is consistent. Suriname is opening itself deliberately, not rapidly. The value lies in patience: longer stays, deeper engagement, and experiences that remain rare precisely because they have not been replicated elsewhere.



River networks connect interior communities. Photo: Katya Van Liebergen



Paramaribo City Centre at dusk. Photo: Shutterstock

TELESUR

Strengthening Suriname's digital backbone



Photo: Telesur

As Suriname's economy becomes more data-intensive, Telesur is strengthening core telecommunications infrastructure to ensure stability, continuity, and secure capacity growth nationwide.

Under the leadership of Doric Armesh Ramlakhan, Telesur is pursuing a modernization strategy focused on resilience rather than rapid expansion alone. As Suriname's economy becomes more data-intensive, the company's approach is deliberately phased: strengthen the core, secure the network, and scale capacity in line with demand. “Strong networks begin with a resilient core,” notes Ramlakhan. This strategy reflects the realities of a small but fast-digitizing market, where downtime carries high economic, institutional, and social costs.

Telecommunications has become one of Suriname's most important enabling sectors, underpinning participation across a country defined by distance, dense rainforest, and limited physical infrastructure. Mobile penetration now exceeds regional averages, driven by high data consumption and multi-device usage per user. Nationwide 4G LTE coverage has become the baseline, while the introduction of 5G services in Paramaribo is expanding capacity for high-speed data, low-latency applications, and real-time digital services.

Against this backdrop, Telesur is reinforcing the parts of the network that tend to come under pressure first as demand grows. Investments target core mobile systems, backbone fiber infrastructure, power redundancy, and cybersecurity across critical nodes. The focus is not headline speed alone, but stability and fault tolerance—ensuring the network performs under peak usage, outages, or adverse conditions.

Current capital programs include renewal of core mobile infrastructure, expansion of fiber capacity along the coastal corridor, and improved failover mechanisms to maintain continuity. These upgrades are essential as usage patterns shift to-



“Strong networks begin with a resilient core.”

Doric Armesh Ramlakhan
CEO, Telesur

ward streaming, cloud services, and always-on connectivity for both consumers and institutions.

Enterprise and institutional demand has grown in parallel. Government agencies, financial institutions, healthcare providers, and industrial operators rely on secure, uninterrupted connectivity for payment processing, regulatory reporting, emergency response, and operational coordination. Demand for managed services—secure networks, data hosting, and compliant connectivity solutions—has increased accordingly.

Nationwide coverage remains a defining mandate. Unlike purely commercial players, Telesur continues to operate and maintain infrastructure in less commercially attractive regions, ensuring continuity across the country. This long-term infrastructure role requires sustained investment, skilled technical staff, and close coordination with public institutions—positioning Telesur as both a commercial operator and a strategic national utility.



TELESUR
Keeping us in touch



www.telesur.sr